

Podcasting comes to Social Work learning. See story on page 6.

INSIDE

FROM THE DIRECTOR

- Go alone and go fast; go together and go far.....** 2
Prof. Victor Whiteman retires..... 2

FEATURE STORY

- The changing face of SW education: MSU takes lead.....** 3
Hartford Practicum prepares students for speciality in gerontological social work..... 4
Kellogg Foundation grant explores health care for youth aging out of foster care..... 5
MSW Flint Program ad..... 5
Podcasting to add flexibility, portability to SW learning..... 6
Violence Against Women Research and Outreach..... 7

NEW FACULTY

- School welcomes new faculty.....** 8

PROGRAM UPDATES

- School welcomes new doctoral candidates.....** 9
CAC now publishing Michigan Child Welfare Law Journal..... 10
BASW faculty and students in the news..... 10
Michigan Indian Day Event..... 11
Spotlight on field liaison..... 12

CONTINUING EDUCATION

- School is now ASWB ACE-approved provider.....** 13

FACULTY NEWS

- Faculty-generated initiatives advance our mission.....** 14

ALUMNI NEWS

- Here's what you're up to!.....** 16

GIFTS THAT KEEP ON GIVING

- Together we can go far.....** 18
Donors enable SSW's research, service, scholarships..... 19

GET IN TOUCH

- Tell us what you're doing.....** 20



MSU, OU go formal



Oakland University and Michigan State University made public a plan that informally had been years in the making. This agreement was signed by the provosts and presidents of each university on August 21, 2006, in a formal ceremony held in Meadow Brook Hall on the Oakland campus.

Currently, OU offers a social work concentration within its Sociology Department and will expand its program to achieve accreditation and qualify its graduates for licensure by the State of Michigan. BASW graduates from an accredited program will also be able to apply for advanced standing in MSW programs, allowing them to complete their degree at an accelerated pace. MSU has hired Marcia Lampen to work with OU as they establish their BASW curriculum, policies and procedures and work towards accreditation by the Council on Social Work Education.

MSU will also expand and improve access to graduate study for Oakland and other area students by establishing an advanced standing social work program on Oakland's Rochester campus. This would be in addition to MSU's continuing Master of Social Work programs located in East Lansing and Flint and through the new blended statewide curriculum, as well as other distance education programs.

Oakland's program is expected to be accredited in 2009, allowing their students access to MSU's graduate program, also projected to be in place by that time.

"Aligning our resources and putting our knowledge to work in a partnership like this one is really what Michigan State is all about," said MSU President Lou Anna K. Simon. "Society keeps looking to its public universities to address its problems, and by working together we're able to build synergies that do far more to make a positive difference than any one of us might do alone." **S**

Pictured from left, front row:
 OU President Gary Russi,
 MSU President Lou Anna K.
 Simon, OU Vice President for
 Academic Affairs and Provost
 Virinder Moudgil, MSU Provost
 Kim Wilcox; back row:
 OU Social Work Concentration
 Director Lynetta Mosby,
 MSU School of Social Work
 Director Gary Anderson



Go alone and go fast; go together and go far



Gary R. Anderson

There are times when we need to go fast, but, generally, we prefer to go far—to have an impact on our students, our University and the broader community.

The School's statement of values specifically highlights collaboration. You will see from this newsletter that we are putting this value into practice: working with Oakland University to expand Oakland's capacity and MSU's MSW program, working with the MSU law school on children's issues, the Department of Psychology on domestic violence, and the MSU veterinary hospitals on clinical support for the human-animal bond, working with students across the state of Michigan and field agencies, building a team to advance gerontological field

education, and building a team for continuing education, promoting Michigan Indian Day, etc.

Another example: we have just gained a new federal grant on post-adoption services in partnership with the Michigan Department of Human Services, Michigan Federation for Children and Families, and Michigan Association for Foster, Adoptive and Kinship Parents (details in the spring).

We prefer partnerships. Sometimes it takes a little longer, and it requires respect and sharing, but together we can go far to prepare students for exciting careers in social work and to strengthen agencies and communities. And going together also means moving ahead with our many alumni and friends. Thank you for your support. **S**



Victor Whiteman

Prof. Victor Whiteman retires

After 37 years of service, Dr. Victor Whiteman is retiring from our faculty. Prof. Whiteman joined the School in 1969. In 1970, he earned a PhD from the Florence Heller Graduate School for Advanced Stud-

ies in Social Welfare at Brandeis University. Due to a special fellowship, he taught for one year at the Department of Social Studies, University of Melbourne (Australia).

At MSU, Prof. Whiteman has taught graduate level courses in the areas of research and evaluation, social policy, and administration. He provided leadership in the development of the School's initial administrative practice MSW program and the Doctoral Program in Social Work. He has chaired dissertation committees of 11 social work PhD students.

Prof. Whiteman facilitated the development of the process used to obtain reaccreditation for the School of Social Work from the Council on Social

Work Education in 1995 and in 2003. Both times, the School was granted full accredited status for the maximum allowable time period.

Prof. Whiteman is the author of a book entitled *Social Security: What Every Human Services Professional Should Know*, published by Allyn and Bacon. He is the co-author of the *Rational Behavior Inventory* and the *Ego and Discomfort Anxiety Inventory* and has published numerous journal articles and monographs.

During his tenure, Prof. Whiteman has served the College and University through many committees and advisory groups. Since 1999, he has been the chair of the Educational Policy Committee in the School of Social Work. He has also served on our Faculty Advisory Committee, the Doctoral Committee, the Research Sequence Committee, and the Search Committee. For many years, Vic has provided quiet and thoughtful leadership at the School. A trusted colleague, directors, faculty members and students have sought his advice and guidance over the years. We are grateful for his service, teaching, and leadership and wish him and his wife many happy years in retirement. **S**

The changing face of social work education: MSU takes the lead



In June, 26 MSW students began a three-year journey as the first cohort in the new **Blended Statewide Clinical MSW Program**, which combines face-to-face, videoconferencing, and online instruction in a unique learning community to bring quality, clinically-focused graduate social work education close to students, wherever they live.

Each student was admitted to a specific regional group with an MSW-level faculty mentor. During the five-day Summer Institute on campus, students met with their group and began work with their mentor. These groups are the students' *home base* throughout the three-year program, with mentors serving as faculty liaisons during both years of field placements.

The blended program's requirements are exactly the same as for the on-campus MSW program, differing only in the method of delivery. Face-to-face meetings take place at three Summer Institutes and once-a-month Saturday sessions in the students' regions, where they link to the other groups and the MSU core faculty by videoconferencing. Students complete most course requirements online in secure web sites, interacting with faculty, mentors, and each other on a regular basis. Field education is structured just as it is on campus, and students are able to use agencies close to where they live or work.

This program is not for everyone. In addition to meeting regular MSW program requirements, potential applicants must be comfortable with online learning, have excellent time manage-

ment skills, and have high-speed Internet access on a regular basis.

MSU's Blended Statewide Clinical MSW Program, fully accredited by CSWE, is the first ever to incorporate such a wide range of technology to make access to a quality clinical program available to students anywhere statewide. It is an outreach project intended to improve access for students with few local options. Applicants must live more than 50 miles from both the East Lansing and Flint campuses. Locations for each year's cohort are determined by where the admitted students live.

If you know anyone who might be interested, have them contact us by email at swdisted@msu.edu or call 1-800-306-2249. Complete information is available at <http://www.msu.edu/~swdisted/statewide.html>. **S**



Face-to-face teleconference sessions are one aspect of the new Blended Statewide Clinical MSW Program.



Students listen to Professor Paul Freddolino at a session from this summer's Institute under the trees on the banks of the Red Cedar River.

Hartford practicum prepares nine students for specialty in gerontological social work



Hartford Practicum Partnership Program Consortium Roster

ALFA Adult Day Services
 Battle Creek VA Medical Center
 CEI/CMH Older Adult Services
 East Lansing Prime Time
 Family Resource Center
 Hazel Findlay Country Manor
 Heartland Hospice
 Hospice of Lansing
 Ingham Regional Medical Center,
 Psychiatry Consultation & Liaison
 Service
 Ingham Regional Assisted Living
 Diane LeVande, MSU Professor
 Emeritus
 Mareck Family and Geriatric
 Services
 Michigan Department of Human
 Services
 MSU Department of Medicine
 Breslin Cancer Center
 MSU Extension Family & Consumer
 Sciences
 Paraprofessional Organization for
 Long-Term Care
 St. Vincent Catholic Charities
 Sparrow Senior Health Center
 Tri-County Office on Aging
 Visiting Nurse Services of Michigan
 White Hills Care Center

Nine second-year MSW students have been selected to participate in the new demonstration program to support field and classroom education in the area of gerontological social work supported by the Hartford Practicum Partnership Program (PPP) Grant received by the School. MSU is one of 25 schools of social work nationally to receive this funding. (Read more about it in the *Spring 2006 News*.) This is a prestigious honor for the School and a valuable networking opportunity for the greater Lansing gerontology community.

Students were selected based on demonstrated interest and academic ability after a personal interview with members of the MSU Hartford Faculty. Two are studying Organizational and Community Practice, and seven are interested in Clinical Practice. There is no formal commitment, but it is expected that these students will work and become leaders in the field of gerontological social work.

The MSU Hartford Faculty worked with the Social Work Leadership Institute at the New York Academy of Medicine, administrator of the grant, to design the MSU program; it includes an innovative rotational field placement experience, rather than the traditional single-agency placement. Each student is assigned to two agencies, serving 12 hours in one and four hours in the other each week, reversing this pattern for the second semester. One setting will focus on intervention with functional impairment or chronic illness and the other on end-of-life issues for older

adults and their families.

In addition, students will visit and report on two additional community agencies focused upon wellness and prevention programs for older adults; complete six workshops (our Contemporary Issues in Aging: Professional Seminar Series); make two field trips to experience cultural difference in intervention and programming for older adults; and participate in a specially designed field liaison seminar focusing on integrating the specific knowledge, skills, and values of the program.

Marcia Lampen, PhD, LMSW, is coordinator of the MSU Hartford PPP and acts as faculty liaison for this group of students.

Students: **Beth Behringer, Lisa Scher, Tina Blaschke, Pamela Milks, Betsey Olds, Kasey Lance, Sarah Schram, Elyse Linstid, Jessica Vining.**

Hartford faculty: **Jo Ann McFall**, RN, LMSW, associate director for field education and advanced clinical practice methods instructor; **Marcia Lampen**, PhD, LMSW, Hartford program coordinator; **Joan Ilardo**, LMSW, graduate student services coordinator and advanced macro practice methods instructor; **Sally Rypkema**, PhD, LMSW, clinical assistant professor; **Julie Navarre**, LMSW, coordinator of field education; **Suzanne Cross**, PhD, LMSW, associate professor; and **Margie Rodriguez-LeSage**, PhD, LMSW, assistant professor.

At least once per semester, all Hartford consortium agencies will meet, serving in an advisory and planning capacity to the faculty. **S**

Kellogg Foundation grant explores health care for youth aging out of foster care

Many young people who age out of the foster care system lead grim lives. Researchers have found that outcomes facing those who have left foster care often include educational underachievement, unemployment, homelessness, involvement with the criminal justice system, disconnectedness from community life, and physical and mental health problems.

Studies note that those transitioning out of foster care are especially vulnerable to depression, substance abuse, and pregnancy. While there has been some attention paid to the physical and mental health of those who have left foster care, not much is known about formal programming and best practices regarding health care.

For example, the federal government has identified three major outcomes for the American child welfare system: safety, permanency, and well-being. Since the federal Chaffee Act of 1997, attention to the needs of youth aging out of care has increased across the country. This attention has primarily focused on the educational needs and opportunities afforded youth leaving the child welfare system.

This focus has resulted in significant state and federally-sponsored tuition assistance programs and mentoring projects. However, the physical health and mental health of youth aging out of care has not received the same attention. There have been few studies describing the physical health and mental health of youth aging out of care, even though these factors have significant impact on their abil-

ity to secure education and employment or to establish or deepen supportive relationships.

In order to advance knowledge about health care for this growing population, the School of Social Work was awarded a \$400,000 grant from the WK Kellogg Foundation. Dr. John Seita, assistant professor in the School of Social Work, leads the team as principal investigator; they will explore the health care status and health support systems available to young people who age out of foster care.

The project will seek to identify and assess the health care safety net for these vulnerable youth, as well as the



John Seita

quality of services, access to services, and community assets that support health care. Although a profile of those who have left care is emerging, little is known about existing state-by-state policies with respect to health care and mental health care and health support for foster care alumni.

The identification of both policy and health care access for alumni of foster care is critical. Both impact the quality of their lives, as well as their ability to engage in personal and professional development, to contribute to family and community life, and to have meaningful life choices and financial stability. **S**

Master of Social Work (MSW) Program in FLINT

For students who want to earn the fully accredited MSW degree. All required courses offered at the Mott Community College Campus. This program has been enrolling students since Fall 2001. Special features include:

- ▶ Classes begin in May or August 2006, taught by MSU faculty
- ▶ Concentration (major) in Clinical Social Work
- ▶ PART-TIME 3-year program with evening courses designed for working students
- ▶ Required field education can be arranged close to where you live or work
- ▶ Our successful experience with MSW programs in Traverse City, Gaylord, Alpena, Saginaw, Marquette, Flint, Lapeer and Sault Sainte Marie

Early decision deadline: December 15. Final deadline for completed applications: February 1. For further information, call Julie Farman, Flint Program Coordinator, at (810) 762-5127 or go to <http://www.socialwork.msu.edu> and follow DEGREE PROGRAMS to the FLINT CAMPUS link under MSW programs.

Podcasting to add flexibility, portability to social work learning experience



“I have found the (social work) faculty eager to experiment with the innovative new technologies which provide enhanced learning opportunities for all social work students. Their enthusiasm to provide an enriching learning environment for students is a model for other departments at MSU.”

—*Dave Collins, MSU Interactive Video Services multi-media producer and podcast project team leader*

“The video content...was very convenient and helpful. I prefer not to take notes during lectures...I find that I get more out of the course when my attention is less focused on recording information and more on ingesting the content of the lecture.”

—*Will Brown, SW 811 student*

Michigan State University joins Duke, Princeton, Purdue, and Stanford in using podcasting technology to enhance learning. Students are constantly seeking new and efficient ways to access course content, and technology gives students more control over their learning.

This fall, Professors **Sally Rypkema** and **Paul Fredolino** of the School of Social Work join colleagues from Advertising and Audiology & Speech Sciences as faculty advisors for this project, which is sponsored and funded by MSU Libraries, Computing and Technology.

The project goal is to improve *accessibility, mobility, and flexibility* for the learning experience. Podcasting technology increases access to video and audio materials, students have content available wherever they are, and they can review it whenever they want it, as many times as they want. Anything that can be videoed or listened to can be presented this way. “If students use podcasts to access course material at their convenience, we can use class time for other learning activities,” Rypkema said.

Dr. Rypkema’s Social Work 811—Social Work Perspectives in Human Development—is providing class materials to students on their video iPods. According to Dr. Rypkema, she is using podcasts to provide supplemental materials that didn’t fit into class time, such as lectures, case studies, and (her personal favorite) a National Institutes of Health animated video (without copyright restrictions) showing the effects of Alzheimer’s on the brain (see photo). She sees exciting applications for this technology beyond the classroom for work with clients and consumers. For this experiment, iPods were provided by the University through a technology grant. If helpful, one challenge will be making such technology affordable and accessible to all students. **S**

MSU students, alumni serve on National Association of Social Workers—Michigan Chapter Board

Congratulations to senior **Angie Hull**, who was elected as the BSW representative to NASW—Michigan Chapter’s Board. She joins MSW student **Danielle Flores** on the Board. This is indeed a great honor for our school. Also serving as Region 1 representative is **Judith Krause** (MSW 2003) and as Region 2 representative **Sha Ron Chamberlain** (MSW 2000).

Violence Against Women Research and Outreach Initiative (VAWROI)

Angie Kennedy, PhD, LMSW, assistant professor in the School of Social Work, is part of an interdisciplinary group of MSU researchers who have begun working together on the **Violence Against Women Research and Outreach Initiative (VAWROI)** led by **Dr. Cris Sullivan**, professor and associate chairperson of psychology. Other members include: **Dr. Rebecca Campbell**, associate professor of psychology; **Dr. Lori Post**, assistant professor and assistant dean for research in the College of Communication Arts and Sciences; **Dr. Sheryl Pimlott Kubiak**, assistant professor in the School of Social Work; and **Dr. Deborah Bybee**, professor of psychology and associate director for research development at the University of Michigan School of Social Work.

Each member's work focuses on aspects of violence against women,

ranging from Dr. Sullivan's research on designing and evaluating community-level interventions for domestic violence survivors and their children, to Dr. Kennedy's work on cumulative violence exposure, resilience pathways, and school and mental health outcomes among pregnant and parenting adolescent women. The Initiative is funded by the MSU Office of the Vice President for Research and Graduate Studies.

The goals of the VAWROI are to foster research collaborations across disciplines in the area of violence against women, to build relationships with community members around these issues, to develop two pilot studies that will further knowledge in emergent areas of violence against women research, and to work toward funding a research center at



Angie Kennedy

MSU focused on designing, implementing, and evaluating community-based interventions in multiple areas of violence against women.

Dr. Kennedy's pilot study uses a risk and resilience approach that examines race/ethnicity, gender, and class as simultaneous,

intersecting forces shaping women's and men's lives, rather than looking at these variables separately. It will examine risk factors, school-related and mental health outcomes, positive psychosocial development, and other moderating variables such as social support and resilience pathways among pregnant and parenting adolescent women recruited from four community-based sites in Lansing, Flint, and Detroit.

For further information, contact Dr. Kennedy at kenne258@msu.edu. **S**

May 15–June 30, 2007

Summer program abroad in Vancouver

The transformation of North America: The political and policy consequences of "Deep Integration" is the title of a new MSU study abroad program sponsored by the School of Social Work that will be held May 15–June 30, 2007.

MSU students will have the opportunity to live at Simon Fraser University just outside of Vancouver, British Columbia, and learn directly from some of Canada's leading social thinkers about fundamental issues now confronting Canada, in particular, and North American society in general.

The program adopts a Canadian perspective on the rapid reshaping of North American society resulting from so-called economic "deep integration." The opening focus will be on how economic initiatives—notably, the North American Free Trade Agreement (NAFTA)—are already

moving Canada, the US, and Mexico in this direction. Our more general concern, however, will be understanding how such developments are contributing to a narrowing of US-Canadian differences in various policy areas, including social welfare, and possibly to the eventual emergence of a new continental political order. Intellectual and popular resistance to these trends will also be examined.

The following courses are offered for credit through this program: SW 470, SW 490, SW 822B, SW 890, ISS 315, SSC 496. The program also includes extended field trips to the Rockies and Vancouver Island, as well as excursions to Vancouver-area sites of interest.

For more information, contact David Katz, associate professor, School of Social Work at (517) 332-5361 or katz@msu.edu. More complete information is available at <http://studyabroad.msu.edu/programs/canadafuture.html>. **S**

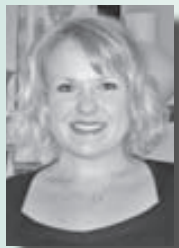
School welcomes four new faculty

Martha Beuerle, DSW, LMSW, joined us in January as a clinical assistant professor. Martha earned her MSW from MSU and her DSW from Columbia University, where she served as adjunct assistant professor for 20 years, teaching primarily practice, Human Behavior and the Social Environment, and family therapy courses. Martha has extensive experience as a clinician, supervisor, administrator, and instructor.



Martha's practice expertise is in working with families, couples, and children. She completed postgraduate training programs at Ackerman Family Institute, Philadelphia Child Guidance Center, and the Family Center of NYC with Salvador Minuchin, MD. She has also supervised social work students and conducted numerous trainings and workshops for agencies in the New York City metropolitan area. In addition to agency practice with poor, urban families, Martha had a private practice specializing in relational issues, addictions, depression, and behavioral disorders with gay and lesbian clients as well as with heterosexual clients.

Monaca Eaton, MSW, LBSW, joins us as continuing education assistant coordinator and as a research project associate. Previously, she served as project assistant for the evaluation of two research projects of the Permanency Planning Mediation Program and the Family Group Deci-



sion Making Program. She received her BSW and MSW in Organizational and Community Practice from Michigan State University and received a Certificate in Macro Practice in the Urban Arena.

Monaca teaches social work research methods and is the project coordinator for *Developing models of effective child welfare staff recruitment and retention training: A federally-funded child welfare training project*.

Her areas of interest include research methods; program delivery, implementation, and evaluation; outreach; community development; art and music therapy; and interdisciplinary social work education.

Sheryl Pimlott Kubiak, PhD, LMSW, joins us from the social work faculty at Wayne State University. She earned her MSW and PhD in Psychology and Women's Studies from the University of Michigan and was a NIMH pre-doctoral fellow in gender and mental health. Her current research interests are at the intersections of criminal justice, mental health and substance abuse—encompassing both individual as well as systems issues.



Sheryl is particularly committed to the well-being of women involved in the criminal justice system and has extensive practice, policy, and research experience in this area.

Sheryl's research looks at implications of cumulative stress, PTSD and depression among women convicted of drug offenses; the impact of welfare reform on those with drug convictions; and the effects of PTSD on incarcerated men and women. She now has

a NIDA-funded project assessing how funding drives service delivery and another looking at implementing Integrated Dual Diagnosis Treatment.

Sheryl credits her strong commitment to oppression and social justice to her mentor and first field instructor, Maryanne Mahaffey; one project was leading a statewide collaboration that obtained a grant to provide alternatives to pregnant women in the criminal justice system. Subsequently, she spent six years as administrator of a community-based agency that exclusively served women involved in the criminal justice system.

Marcia Lampen, PhD, LMSW, began her career as a registered nurse and trained in a combined program with Calvin College and Blodgett Hospital in Grand Rapids. She received her BA from Aquinas College also in Grand Rapids, her MSW from Western Michigan University, and her PhD from MSU.



She has joined the School as assistant clinical professor and serves as coordinator of the Oakland/MSU partnership and as liaison for the Hartford Practicum Partnership Program.

Her career has been focused on social work in medical settings. She practiced social work in Hospice of Greater Grand Rapids and Mary Free Bed Rehabilitation Hospital before beginning her academic career. In addition to medically-related interests, Marcia also enjoyed the opportunity to work in Romania under two separate USAID grants focusing on the social welfare needs of that post-communist country. **S**

School welcomes six new doctoral candidates

This year's incoming cohort for the Doctoral Program in Social Work is an especially interesting and talented group, with diverse backgrounds, interests, and social work experiences.

Brian Ahmedani received his BA (Psychology) from Aquinas College and MSW from MSU. He is working as a program evaluator for the State of Michigan and has worked for the last few years as a mental health worker on an inpatient adult unit. He joins the program with an interest in exploring the extent to which culture, spirituality, and physical health influence mental health using a cross-cultural perspective.

Gretchen Archer, also an MSU MSW alum, received her BA (Psychology) from Auburn University. She has worked extensively with survivors of domestic violence with residents of public housing and as an evaluation specialist. During her doctoral studies, Gretchen plans to focus on organizations that have an empowerment-based focus with a particular interest in those organizations that work to empower women.

Robert Hock earned his BA (Psychology) from MSU and his MSW from State as well. His practice experience includes work with children with mental illness and their families, adults with depression and anxiety, psychological testing, and school interventions. He is currently a child and family therapist in East Lansing. During his doctoral studies, he will pursue a line of research focusing on children with developmental disabilities and family functioning.

Lihua Huang is on leave from being a professor of social work in China. She received her BA from Nanjing University in Chinese Linguistics and Literature and her MSW from Grand Valley State University. Her social work practice experience includes work with social work students, refugee and immigration issues, and professionalizing social work in China. She has written on social work with groups and is interested in studying international social work and immigration.

Yeon Soo Kim received her BA from Ewha Women's University in Seoul, South Korea, where she studied social work and psychology. She received her MSW from the University of Michigan where she focused



Pictured first row, from left: Robert Hock, Gretchen Archer, Brian Ahmedani. Second row, from left: Lihua Huang, Yeon Soo Kim, Deborah McCormack.

on aging and has worked in senior centers in Korea, Ann Arbor, and Chicago. She plans to continue with this line of work, and is particularly interested in looking at community approaches to impoverished seniors.

Deborah McCormack is a BASW grad from MSU who received her MSW from Wayne State University. She has extensive social work experience in hospitals, with the elderly, and in the area of grief and loss, as well as in nonprofit management and with community partnerships. Currently, she is president and CEO of Catholic Charities of Shiawassee and Genesee Counties and plans to focus her doctoral studies on organizational management and decision making.

Hock and Ahmedani have received Rasmussen Fellowship Awards from the MSU graduate school, awarded to outstanding students in recognition of demonstrated scholarship and integrity. **S**

Newly-elected Phi Alpha Honor Society officers

President: Kyle Anderson (MSW program)
 Vice-president: Deborah Delcamp (MSW program)
 Secretary/Treasurer: Brittany Fila (BASW senior)

Sue Bowden, undergraduate program coordinator, is the Phi Alpha Adviser. Phi Alpha is a national honor society for social work students.

Chance at Childhood Program now publishing *Michigan Child Welfare Law Journal*

MSU's Chance at Childhood (CAC) Program, an initiative between the School of Social Work and the College of Law, has assumed responsibility for publishing the *Michigan Child Welfare Law Journal*, the official publication of the Children's Law Section of the Michigan State Bar. The *Journal's* editorial board includes faculty from CAC, MSU School of Social Work, Thomas M. Cooley Law School, and University of Michigan Law School, with additional funding from the Governor's Task Force on Children's Justice.



Joe Kozakiewicz
CAC Director

Since it began in 1996, the *Journal* has provided timely information regarding effective practice in child welfare. The *Journal* is published quarterly and presents a multidisciplinary approach to practice in child welfare. The goal of the editorial board is to ensure that the *Journal* is of interest and value to all professionals working in the field of child welfare, including attorneys, social workers, medical professionals, and psychologists.

The *Journal's* content revolves around practice issues; the editorial board will seek contributors to the *Jour-*

nal who are active practitioners in the field of child welfare. Each issue will be organized around a specific topic such as child dependency, foster care, and special education issues. CAC is excited to begin this endeavor to help improve the practice of child welfare throughout the State of Michigan. **S**



You may subscribe to the *Journal* for a low introductory rate of \$15 for an annual subscription. Make check payable to the **State Bar of Michigan** and send with your subscription address to: Chance at Childhood, School of Social Work, 238 Baker Hall, Michigan State University, East Lansing, MI 48824.

BASW faculty and students in the news

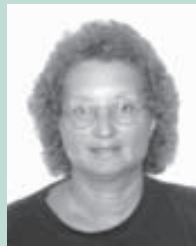
We were pleased to greet 64 new juniors this fall and many new faculty to our program. **Cynthia Edmonds-Cady**, PhD (MSU 2006) joins **Linda Lawrence** to advise freshmen and sophomores. She is also working on several new projects to further enhance our ability to connect with students interested in a social work major.

In October, we returned to Chicago for this year's diversity-themed field trip. Visits included the Howard Brown Health Center for LGBT clients, the DuSable Museum of African American History, the Mexican Fine Arts Museum, and Hull House. Thanks to recent grads **Megan Loch**, **Angie Hull**, and **Claudia Jean Pierre** for their help with organizing and planning the trip.

Other BASW students in the news:

Kyle Anderson (BASW 2006) was named *Outstanding Senior* in the School of Social Work; Kyle was active in Phi Alpha and Students for Social Work.

Paul Brown (BASW 2006) received the *Lucille Barber Award* for overall academic excellence in addition to other



Sue Bowden
BASW Program
Director

competitive awards at the college, university, and state level; he presented at the 16th International AIDS Conference in Toronto last summer.

Senior **Claudia Jean Pierre** received the *Ernest and Phyllis Green Black Alumni Scholarship Award*.

Senior **Jason Cross** received a *Charles Hayden Kelly Scholarship*.

Kyle Anderson, **Mary Johnson**, and **Letisia Pena** (all BASW 2006) organized our School's participation at *Relay for Life*.

Jessica Marie Ortiz (BASW 2006) was invited to join Phi Beta Kappa national honor society.

Senior **Katrina Humphreys** won Honorable Mention in the MSU Global Focus International Photography Competition, student division. **S**

Check out the new BASW web page!

Click on the BASW links on the MSU School of Social Work web page and now you will find information for prospective students, including the bulletin and an application for MSU students, as well as our handbook and other materials. If you have any comments, please contact Sue Bowden at susan.bowden@ssc.msu.edu.

Michigan Indian Day Event 2006

Cultural Relevance: Strategies for Empowering American Indian Families & Communities in Michigan



MSU faculty, social work practitioners, elders from tribal communities and students from several disciplines all came to Michigan Indian Day Event 2006. **Dr. Kip Coggins**, member of the



Dr. Kip Coggins

Grand Traverse Band of Ottawa and Chippewa Indians and faculty member of the University of New Mexico Social Work Program, provided the morning keynote address: *Incorporation of traditions as a pathway to providing culturally competent services throughout the life course.*



Dr. Dan Radawski

Dr. Dan Radawski, a physician from the Saginaw Chippewa Indian Tribe's Nimkee Memorial Wellness Center, presented the afternoon keynote address. He described several cultural differences to consider in development of services for American Indians.

Additional sessions included: the Indian Child Welfare Act, State of Michigan Native American Initiatives, kinship care, gaming issues, the value of preserving culture, mental health issues, and two student panels. This event has grown over its five years to include continuing education credits, a resource room, door prize drawings, and many more sessions.



Dr. Suzanne Cross

The event, organized by Associate Professor **Suzanne Cross**, PhD, LMSW, concluded with traditional drumming and singing and presentation by Ingham County Commissioner **Debra De Leon** of a resolution recognizing Michigan Indian Week in Ingham County as September 18-22, 2006. **S**

"Beyond feeling genuinely welcome to participate in this wonderful event, what struck me the most was the overlap of traditional American Indian values—like sharing, patience, and a broad view of the family—with professional social work values."

—Dr. John Mooradian, assistant professor
in the School of Social Work

"Michigan Indian Day was an empowering event....The discussions that took place need to occur not just on Michigan Indian Day, but every day."

—Don Lyons, senior majoring in hospitality

Event sponsors

Michigan State University

School of Social Work
Diversity Committee—School of Social Work
College of Osteopathic Medicine
American Indian Studies Program
College of Social Science
Graduate School
University Outreach and Engagement
Families and Communities Together Coalition (FACT)
Counseling Center
Honors College
Affirmative Action Compliance & Monitoring (Creating Inclusive Excellence Funding)
Department of Anthropology

Lansing Community College

Saginaw Chippewa Indian Tribe of Michigan

At-large Program
Nimkee Memorial Wellness Center
Tribal College

Associations

Michigan's Children
National Association of Social Workers—Michigan Chapter
Michigan Humanities Council

Individuals

James R. Colthorp & Suzanne L. Cross

Spotlight on field liaison faculty Representing more than 650 years of practice experience

The Graduate Field Liaison Model developed by the School in 1998 supports our Field Education Program and creates a group of outstanding practitioners available to the School for purposes of teaching and serving in advisory capacities. These committed individuals keep the School in tune with the social work practice community across the state; this model has been duplicated in other schools across the region.

Today, we have 39 liaisons stretching from Macomb County northeast of Detroit to Baraga County in the Upper Peninsula. They represent more than 650 years of social work practice experience, or an average of nearly 17 years per liaison. These individuals come to us as full- and part-time public and private agency professionals as well as private practitioners, consultants, and other highly skilled social workers with time and energy to offer. They represent school, hospice, medical, mental health, child welfare, gerontological, and many other social work practice settings.

In addition to community practitioners, faculty and doctoral students facilitate field seminar groups and monitor the placements of our 350 students, providing 168,000 hours of service within our communities. Liaisons must have the LMSW credential, ability to drive, and skills in negotiation and facilitating groups, but most of all an interest in teaching MSU social work students. There is limited turnover for this position, but if you wish to become a liaison, please contact Jo Ann McFall at (517) 353-8631 or joann.mcfall@ssc.msu.edu. **S**

Remembering...

Gloria Laundry, MSW 1991, died in March 2006. Laundry was almost 40 when she went back to school, eventually earning her MSW. She was a clinical social worker and family services therapist at the District Health Department in Alpena, working in rural family services, substance abuse services, and most recently in Maternal and Infant Support Services in the Day One program. She was an active volunteer in the National Association of Social Workers—Michigan Chapter, serving on the board and as a founding member and leader in the Northeast Lower Michigan member group.

Field Liaison Faculty

East Lansing Program

Julie Navarre, coordinator • Ann Andrews • Mary Boudreau • Marian Bouwmeester • Sue Bowden • Jane Campbell • Leisa Fuller • Dikke Hansen • Muthoni Imungi • Kim Keilen • Marcia Lampen • Anne Lange • Linda Lawrence • Amy Logel • Maureen Moloney • Millie Powe-Ericson • Linda Reemes • Rita Walters • Tammy Watson • Cheryl Williams-Hecksel

Flint Program

Linda Campbell, coordinator • Renee Cousino-Marshke • Paul Jordan • Tiffany Martinez

Out-state Program

Rachel Crandall—Wayne, Oakland, Macomb Co.
Corinn Denay—Bay City, Midland
Stephene Diepstra—Grand Rapids, Ionia, Battle Creek
Renee Kruse—Howell, Farmington Hills, Leslie
Carolyn McAllister—Mt. Pleasant, Midland, Sheppard, St. Johns
Melody Munro-Wolfe—Lapeer, Caro, Marysville, Port Huron, Sandusky
Al Platt—Mason
Sue Schram—Saginaw
Ronnie Tyson—Jackson, Adrian, Battle Creek

Gaylord Program

Patti Quinlan, coordinator • Dawn Smith

Marquette Program

Connie Eltman—Marquette
John Gagnon—Escanaba, Iron River, Iron Mountain, Manistique
Anni Gregor—Hancock, Calumet, Houghton, Ontonagon, Wakefield
Bill Tucker—Marquette

SAVE THE DATE

Ruth Koehler Conference: Issues & Challenges in Play Therapy with Children from Diverse Cultures

Presenter: **Nancy Boyd Webb**
Distinguished Professor
Graduate School of Social Service, Fordham University

March 30, 2007
East Lansing

School is now ASWB ACE-approved provider

This has been an exciting year of change and growth! We have provided educational programming for well over 1,000 social workers. And, in response to the need for an expanded continuing education program, **Monaca Eaton**, MSW, was hired as assistant coordinator. In addition, the MSU School of Social Work is now Association of Social Work Boards (ASWB) Approved Continuing Education (ACE) Provider No. 1136. Most states, including Michigan, accept ASWB ACE-approved

continuing education programs to meet licensing renewal requirements.

Social work is a dynamic, innovative profession which continually challenges social workers to adapt, learn, and grow. We look forward to offering programs that will continue to help social workers meet these challenges and support ongoing professional development. Please contact us to share your continuing education interests by phone, (517) 353-8620, or email, swkce@msu.edu. **S**

Our schedule of programs is subject to change. To download a registration form, to learn more about our programs, and for updates, visit www.socialwork.msu.edu/ceu.

Upcoming 2007 CE programs

Alumni Breakfasts, Lansing

January 26: Promising Practices: Human Animal Bond

April 13: Promising Practices: Cognitive Behavioral Interventions with Children in the Juvenile Justice System

Contemporary Issues in Aging, East Lansing

February 24: Managing Chronic Illness: Stanford Model of Chronic Disease Self Management

March 24: Wellness

April 21: Substance Abuse

Genesee Valley Social Work Breakfast: Empowering Communities

March 15, Flint

Secret World of Youth: Hazing and Cyber Bullying

—Glenn Stutzky

March 16, Dearborn; March 23, Marquette

Ruth Koehler Conference: Issues and Challenges in Play Therapy with Children from Diverse Cultures—

Nancy Boyd Webb, distinguished professor, Graduate School of Social Service, Fordham University

March 30, East Lansing

Play Therapy: an Introduction to Experiential Child Centered Approaches—Millie Powe Ericson

April 20, Bay City

Social Work License Exam Preparation

May, East Lansing

June, Rochester Hills

Future topics:

Ethics and End-of-Life Care, East Lansing
Pain Management, Novi

Frequently asked questions

Will workshops offered by the MSU School of Social Work Continuing Education Program meet the State of Michigan social work requirements?

Yes! When you attend one of our programs, continuing education contact hours (CECHs) will be available and approved unless otherwise noted. MSU School of Social Work is a nationally-recognized ACE-approved provider, which qualifies our programs for CECHs in Michigan. We also go through the State of Michigan's approval process. MSU is a member of the State of Michigan continuing Education Collaborative, the body designated by the State Board of Social Work Examiners to ensure quality continuing education programs are provided to Michigan's social workers. To learn more about this collaborative, visit the web site at www.socialwork-cec.org.

When do I need to collect my 45 Social Work Continuing Education Contact Hours?

Fully-licensed social workers who have entered their first licensure renewal cycle are required to obtain 45 CECHs in three years in order to be eligible to renew their license. For example, if you renewed your license in May 2006, you have until April 2009 to acquire 45 hours of continuing education. Five of these hours must be in Ethics, and one must be in Pain Management.

How can I learn more about licensure?

Contact the State of Michigan Department of Community Health at (517) 335-0918 or on the web at www.michigan.gov/healthlicense.

What is the Social Work Licensure Exam Prep Course?

In Michigan and many other states, social workers are required to take an exam in order to become fully licensed. The exams are developed by the Association of Social Work Boards (ASWB). You may visit www.aswb.org for more information. The MSU School of Social Work offers exam preparation courses three times each year.

Faculty-generated initiatives advance our mission

Work by faculty to secure funding to support our research, teaching, and outreach is vital to the mission of the School and hopefully will generate knowledge that improves lives and has a positive impact on families and communities.

—Dr. Gary Anderson,
director, School of
Social Work

DeBrenna Agbenyiga, PhD, LMSW, has been elected to full membership in the MSU African Studies core faculty. She was lead instructor for *International cross-cultural comparative analysis of social work practice: The Ghanaian experience* this past summer; **Julie Navarre**, MSW, LMSW, also participated, assisting students and the field office of the University of Ghana School of Social Work

Ama Amgyemang, MSU Kinship Care Project coordinator, has received a FACT grant titled *Advancing knowledge about Michigan's most vulnerable caregivers: Grandparents raising grandchildren*.

Gary Anderson, PhD, LMSW, has had two federal grants renewed: *Recruitment and retention of child welfare workers*, with **Peg Whalen**, **Monaca Eaton**, and **John Mooradian**, and an MSW traineeship grant with **Peg Whalen**. He is also co-editor (with **Joan Pennell** of North Carolina State University) of *Widening the circle: The practice and evaluation of Family Group Conferencing with children, youths, and their families*. He is also principal investigator for an Adoption Opportunities grant awarded in October as part of a five-year federal grant submitted by Michigan DHS to develop marriage support curriculum and programming for foster parents, kinship and pre-adoptive parents; **John Mooradian**, **Tina Timm**, **Peg Whalen**, **Robert Hock**, and **Brian Ahmedani** will assist on this project.

Sue Bowden, MSW, LMSW, BCD, was sent to Jamaica by the MSU Office of Study Abroad last winter to discuss BASW student exchanges and other educational opportunities with faculty from the University of West Indies, Mona Campus, in Kingston. She is also working with an interdisciplinary committee of faculty and students to explore expanding the number of deaf and hard-of-hearing students in the undergraduate social work program.

Suzanne Cross, PhD, LMSW, presented on American Indian grandparents parenting their grandchildren at the 5th Hawaii International Conference on Social Sciences in Honolulu, HI; the complete monograph was reproduced in the conference proceedings. She and **Sue Bowden** received a grant from the MSU Office on Affirmative Action to support MSU's *Michigan Indian Day*; the School, under Cross's leadership, has been the primary sponsor of *Michigan Indian Day* since its inception. She also received a grant from the MSU Honors College to include their students on a research team studying *The impact of religion and spirituality on American Indian and African American women age 55-70 years of age*; and she has had an article published in *Child Welfare Journal*.

Paul Freddolino, PhD, was part of a delegation from the National Association of Social Workers visiting human service agencies in Beijing early in November. He will also meet with social work faculty at universities in Beijing to discuss possible future connections.

Rena Harold, PhD, LMSW, is co-chair of MSU's Women's Advisory Committee to the Provost, and has been appointed to the editorial board of the *Journal of Social Work Education*. She has received a grant from the National Science Foundation to study *An ecological systems theory approach to examining the impact of IT*.

Joan Ilardo, MSW, LMSW, has received continuing funding for a Medicaid grant: *Home and Community Based Waiver and Family Decision Making*; **Nicole Bonter**, second-year MSW student, is the research assistant. Ilardo is also on the design and implementation team as the evaluator for the Ingham County Family Drug Court.

Cynthia Jackson-Elmoore, PhD, was part of a team that received an MSU Community Vitality grant this spring. She also received a commendation from the Provost's

Office for participating in MSU Learning Community initiatives with scholarly discussions on problem-based learning. Jackson-Elmoore has had three peer-reviewed articles published this past year in *American Journal of Health Education*, *Cities*, and *National Civic Review*.

Angie Kennedy, PhD, LMSW, is co-principal investigator on a three-year federal Health and Behavioral Research Initiative Grant for the Violence Against Women Research and Outreach Initiative; **Sheryl Kubiak** is also involved.

Joe Kozakiewicz, JD, LMSW, reports that Chance at Childhood has developed a pamphlet to assist Michigan school personnel in applying/properly following the Child Protection Act. The format is being finalized and a strategy is being developed to disseminate the pamphlet to school personnel throughout the state.

Sheryl Kubiak, PhD, LMSW, has a National Institute on Drug Abuse (NIDA) grant for her work in the area of substance abuse treatment. She is one of five faculty members nationally to be awarded the *Early Career Social Work Research Mentoring Travel Award*, co-sponsored by NIDA and the Institute for the Advancement of Social Work Research to support her attendance at a two-day NIDA conference.

Linda Lawrence, MSW, LMSW, and her work at the MSU veterinary hospitals was featured in a special section of the *Detroit Free Press*, as well as in publications of the Michigan Veterinary Medicine Association and the MSU College of Veterinary Medicine alumni newsletter, and on television in Detroit and Saginaw.

Jo Ann McFall, MSW, LMSW, continues to collect and analyze data on the evaluation of field education outcomes; the Field Research Team, comprising McFall, **Paul Freddolino**, **Julie Navarre**, **Muthoni Imungi**, and **Tina Timm**, will publish the results and implications for field education programs. Jo Ann is also involved with administering the Hartford Practicum Partnership Project Grant and with a committee developing social work services/supervision within the Carefree Medical Clinic.

John Mooradian, PhD, LMSW, LMFT, had one article published and another accepted in *The New Social Worker*. His chapter "You can't go home again: Disproportionate confinement of African-American juvenile delinquents" will appear in *Juvenile Violence and Delinquency Interventions*. He co-authored a technical report to the State of Kansas

on *Evaluation of a Therapeutic Wilderness Family Camp Program Utilizing Family-Directed Structural Therapy*. John also presented on clinical supervision at the MSU Social Work Alumni Breakfast and Field Instructor Enrichment meetings and has served as a prepublication reviewer for Sage Publications and Lyceum Books.

JoAnne Riebschleger, PhD, LMSW, and her work on children's mental health were featured in the statewide newsletter of the Association for Children's Mental Health. She is also part of a research team comprising university, community, and government partners awarded an MSU FACT grant to study children coping with parental mental illness; **Peg Whalen** also serves on this team.

Sally Rypkema, PhD, LMSW, has received a commendation from the Provost's Office for participating in MSU Learning Community Initiatives on hybrid learning strategies, tactics, and implementation.

John Seita, EdD, is principal investigator on a two-year WK Kellogg Foundation grant to study the health care system supports for young people who have transitioned from the foster care system. He was interviewed on Lansing radio station WXLA in August regarding children who age out of foster care and was featured in an article in the *Detroit Free Press*.

Marya Sosulski, PhD, LMSW, received a commendation from the Provost's Office for participating in MSU Learning Community Initiatives on creating an inclusive learning environment. Her grant study of Medicaid and families with severe and persistent physical and mental disabilities has been renewed; **Joanne Riebschleger**, **Angelique Day**, and **Ellen Sugrue Hyman** are investigators on that grant.

Glenn Stutzky, MSW, LMSW, was interviewed for a segment on bullying on the *Paula Zahn Now* show. He also participated on a panel regarding bullying and anti-bullying tactics at a Policy Forum convened by the Institute for Public Policy and Social Research (IPPSR), the nonpartisan public policy network at MSU.

Tina Timm, PhD, LMSW, was awarded a one-year Aldrich Faculty Research Grant to develop and test an on-line training program focused on issues of sexuality and aging. This training program will be designed specifically for social workers employed in long-term care facilities. **S**

Here's what you're up to!

Coulter receives Alumni honors

Barbara Coulter, BASW 1960, was honored as the 2006 recipient of the MSU University Alumni Service Award. The MSU Alumni Association selects winners from candidates who have demonstrated continuing outstanding volunteer service to MSU and/or meritorious public service on a local, state, national, or international level. Candidates must possess the highest standards of integrity and character to positively reflect and enhance the prestige of MSU.

Coulter provided a lifetime of service to MSU through her contributions and tireless efforts organizing and serving on the board of the Grand Traverse Alumni Club; her 33 years of service there included roles as founding board member and past president.

She spent many years in the field of social work in various communities until she dedicated her skills to become a piano teacher in Traverse City, MI. Coulter also served as founding board member and past chair of the Traverse City Music Teachers Association, board member of the Traverse City Arts Council, past board member of the Traverse City Symphony, and has served on numerous community committees and service boards in the Grand Traverse area. She continues to teach and play music and volunteers as an organist for her church.

Coulter recently retired to Florida, where she is busy organizing a new Alumni Club.

Shirley Hunt Alexander, MSW, is retired and now working as State Advocacy Chair for Minnesota AARP. She is involved in political activities and is deeply concerned about the direction government is taking.

David Berns, MSW 1979, moved from his position as director of the Arizona Department of Economic Security (the state agency responsible for child welfare, TANF, employment services, child support, developmental disabilities, vocational rehabilitation, child care, adult services, and other programs) to the Casey Foundation in Seattle. He retired from the Michigan Department of Human Services in 1997 and from the El Paso County DHS in 2003.

Judith L. Church, MSW 2000, is employed at Christian Family Services of Lapeer, doing clinical counseling with children, adults, couples, and families. She also provides classroom observations and other mental health services to Lapeer, Imlay City, and Oxford Head Start Programs.

Paula L. Clark, BASW 1969 & MSW 1971, has retired from full-time work and thoroughly enjoys working part-time as adjunct faculty at Lansing Community College and in the Home Care and Hospice Programs at the Barry-Eaton County Health Department. She continues to be active in MSU alumni and sports activities, traveling, bridge, and bicycling. She enjoys theater, opera, her dog (Hannah), and all her friends.

Annette (Courter) Fortino, BASW 1980 & MSW 1990, is in private practice at Delhi Behavioral Health Associates. She retired after 24 years with Clinton-Eaton-Ingham Community Mental Health. She acquired CAC Level-II and Department of Transportation Substance Abuse Professional Evaluations, has been a member of ACSW since 1992, and specializes in personality disorders, trauma, and adult mental health.

Heidi Jo (Geiger) Glew, BA 2002, received her MSW from U-M in 2003 with a dual focus on interpersonal practice and aging in society with concentration in end-of-life care. She currently works as a hospice social worker in Lansing. She stays active with continuing her education and social work groups, is an active member of NASW-Michigan Chapter's Aging Special Interest Group, and is educational chair for the Michigan Association of Hospice Social Workers.

E. Jane Hayes, MSW 1987, and current PhD candidate, presented at the 2006 Midwest Biennial Social Work Education Conference on *Political Action and Policy Practice: A Humanistic and Social Justice Perspective*, which was based on her work in the doctoral policy course and utilizes a framework for political action reflecting the humanistic and social justice values of social work.

Donna L. Konopka, BASW 1976, is currently employed at the State of Michigan Office of Children and Adult Licensing. She has worked for the State of Michigan for 27 years, first in inpatient mental health care and

Tenure times three—MSU social work doctoral alumna **Loretta Brewer**, PhD 2002, received tenure at Arkansas State University this spring; **Lucy Mercier**, PhD 1999, at Saginaw Valley State University; and **Shari Munch**, PhD 1998, at Rutgers.

now as a regulator of adult foster care homes.

Nancy P. Kropf, PhD, MSW 1983, has been appointed professor and director of the School of Social Work at Georgia State University, where she has been on the faculty for the past 16 years and has held numerous administrative roles within the school, Gerontology Center, and central administration. She is a Fellow in the Gerontological Society of America, and a John A. Hartford Geriatric Social Work Scholar. She has also been active in the Association of Gerontology Education in Social Work and the Association of Gerontology in Higher Education, was a visiting endowed chair of gerontology at St. Thomas University (New Brunswick) and the Cecil and Ida Green Honor's Professor at Texas Christian University.

Debra (Holm) LeBlanc, MSW 1992, is employed at Bay Mills Community College as the director of TRIO Student Support Services and chair of the Social Science Department. She has also been coordinator of mental health social services at the Bay Mills Indian Community and worked in substance abuse and mental health for the Sault Ste. Marie Tribe of Chippewa Indians and Munson Hospital in Traverse City.

Edna Y. H. (Ching) Ling, MSW 1947, is retired. Her career in Hawaii has included social work with the American Red Cross, medical social work, elementary education, and elementary school counseling. She retired in December of 1980.

Thomas Lovejoy, BASW 1974, is retired. He is currently a VFW service officer at Post 3256 in Montague, MI.

Carrie O'Toole, MSW 2001, is currently employed with the Saginaw



John E. Davis, LCSW, DCSW, ACSW (MSW 1955) presented *Ethics: Words into Deeds, Code into Behavior* at the first Alumni Association breakfast of the season in September. Davis has been named a *Social Work Pioneer* by the National Association of Social Workers and has had a distinguished career spanning more than 50 years. He is "mainly retired" in Texas and still teaches seminars and has a limited private practice.

Intermediate School District working with autistic children. She is also a part-time clinical therapist at Saginaw Psychological Services specializing in eating disorders and autism spectrum disorders.

Leticia Contreras Pena, BASW 2006, is the first MSU student to be awarded the NASW Gosnell Scholarship, for an MSW candidate who, during their undergraduate education, demonstrated a commitment to working with, or had a special affinity with, American Indian/Alaskan Native and Hispanic/Latino populations, or in public and voluntary nonprofit agency settings. She will pursue her MSW at the University of Michigan.

Sandy Alden Pospisil, MSW 1976, wonders how to reach Virginia Wagner.

Lisa Ratta-Shoshan, BASW 1998, is working at Washington (DC) Hospital Center with pregnant and parenting teenagers in a medical model-based program providing prenatal/OB-GYN medical care. She uses her Spanish almost daily due to the large number of Latina patients and loves her job.

Tricia Y. (Croxtton) Richardson, BASW 1996, is working at Employment & Training Designs, Inc. as a transition specialist for the foster youth demonstration project *Creating Independence & Outcomes*. She provides supportive

services, information, and referral to youth who are aging out of the foster care system.

Bethany Anne Roberts, 1962, won several awards in the MSU Global Focus international photography competition. Her photos can be seen in the 2005 alumni gallery at www.isp.msu.edu/photocontest/.

Jeri (Bertapelle) Schulz, BA 2005, has been attending the University of Michigan and will graduate in December 2006 with her MSW focusing on gerontology social work.

Jon Steimel, MSW 1980, was featured in the Alma College magazine *Accents* for his work as a school social worker for Central Montcalm Public Schools for the past 13 years, as well as his summers providing in-service training and consultation in Estonia for their child welfare system.

Dale Teller, BASW 1973, is currently working in juvenile probation and supervision.

Ellen (Yakemonis) Koerner, BASW 2002, is employed by the Livingston Educational Service Agency in Howell, MI, as a school social worker for students in grades 1-8.

Dorothy Zynda-Snyder, BASW 1974, has a clinical private practice and consulting practice that assists other professionals in starting up their practice or enhancing existing practices. **S**

Josh Smith, BASW 2000, MSW 2001, has been active doing continuing education and training on his practice specialty, Dialectical Behavior Therapy, an innovative method of treatment developed specifically to treat patients with borderline personality disorder in a way which is optimistic and supportive in nature and makes effective use of clinical resources. He regularly presents in our SW 851 course for second-year clinical students.

Together, we can go far...

To prepare our students for effective work with children and families and older adults, and with communities, and through policy-making and organizational and political processes, we need your support. To engage in research that asks meaningful questions and provides useful information, we need your help. To be responsive to agencies and state organizations and to work productively across the state of Michigan and beyond, we need your financial assistance.

In 1996–1997, 52% of the funds that support Michigan State University came from the State of Michigan. That support has changed over the past ten years so that today only 36% of this public university’s budget comes from the State of Michigan.

For many years, MSU depended on the State of Michigan for funding as we were a public university, engaged in a mission that promoted the economic and overall well-being of the state. Tuition was comparatively low. Many of our friends and alumni benefited from this relatively affordable education at a major public university. However, today, student tuition provides 55% of the funding for the University. State funding appears to have been replaced by student tuition dollars.

Consequently, **one of our goals is to increase the amount of funding that the School can give to social work students to reduce their debt and promote their engagement in the educational process.** Our endowed funds create \$40,000 annually to give in scholarships. For the class entering in 2007, we would like to be able to give \$75,000 in scholarship funds.

Other areas for growth:

- Adding **innovative content** to our curriculum and developing post-graduate programs would benefit students and alumni alike. We would like to launch a comprehensive post-graduate program in organizational leadership and in clinical practice. Given the School’s strong track record in preparing social workers for political office and our location in the state capital, seminars and workshops on political leadership would be an important addition to our curriculum. We need financial support to secure talented leaders to train future leaders.

- Brief study trips in the United States and in other countries have life-changing possibilities for our students, who are predominantly from the state of Michigan. The School is developing a **range of innovative Study Away (in the United States) and Study Abroad (around the world) programs**, but we need support for student scholarships and for program development and faculty participation. Is there somewhere in the world that you think would be a good place for social work students to study?

- **Research partnerships** between faculty, students and community agencies provide great learning opportunities for students and the opportunity to assist the community. To make these happen, we need funding for faculty mentors and student scholarships. Are there particular areas that could most benefit from these partnerships?

We believe that the School of Social Work has a special opportunity to educate and train professionals that will play a crucial part in the economic transformation of Michigan. **Attentiveness to the psycho-social and cultural dimensions of education, health, and employment and skill in supporting neighborhoods, communities, and organizations are crucial for Michigan’s growth.** We want to be active partners with an innovative group of statewide stakeholders. We encourage you to invest in the next generation of social workers and social work education. Thank you! **S**

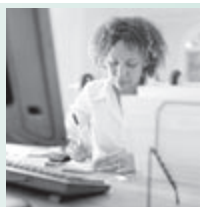
Donors enable School of Social Work's research, service and scholarships...*thank you!*

Mark & Alice Alcorn
 Gary R. & Valerie Anderson
 Dr. Gwen Andrew
 Stephen Andrew
 Joyce E. Asem
 Duane W. Beck & Enid German
 Mary A. & James E. Bernard
 Mr. & Mrs. Henry V. Bohn
 Mary Boudreau & Susan Grettenberger
 Michael & Susan Bowden
 Katherine E. Brady
 Marion K. Brennan
 Dr. Robert G. & Mrs. Janet D. Bridgham
 Dr. & Mrs. Brogowicz
 Jere & Arlene (Koehler) Brophy
 M. Louise Brouillette
 Jill M. Brown & David Figg
 Dr. David & Mrs. Ann Bucheck
 Elizabeth Carey & Michael Young
 Theodore R. & Montios Chavis
 Walter & Beatrice Chun
 Paula L. Clark
 Laurel & Richard Cohen
 Mary Alice Collins & Gerald Brocker

Lana G. Dart
 John E. & Ann C. Davis
 Mara Davis
 Paul & Anne DeRose
 Karl & Katherine Dorshimer
 Sandra & James Dunn
 Jane W. Erickson
 Nancy L. Fair
 Katherine R. Ferguson
 Stephen & Victoria Fitton
 Peggy & Dennis Frank
 Cara L. & Calvin L. Frappier II
 Dr. Paul P. & Mrs. Donna K. Freddolino
 Harold S. & Nancy E. Gazan
 Margaret & Perry H. Gregory
 Dr. Alan P. Grimes Sr.
 Maurice A. Grondin
 Kelly & Bruce Gruner
 Rena Harold
 Christine Herman
 Dr. John M. & Mrs. Kathleen M. Herrick
 Thomas S. & Janis M. Hollingsworth
 Joan Ilardo
 Cynthia Jackson-Elmoore
 Daniel & Debra Jimenez

Jeffrey Johnson & Deborah Harris
 Barbara J. Kern
 Jae Yop Kim
 David G. & Constance E. Knaggs
 Mr. & Mrs. John Lamie
 Gail E. Lanphear
 Mary Lark
 John B. & Susan L. Leahy
 Drs. Diane & James Levande
 Edna C. Ling
 John C. & Dahna S. Loeding
 Irene Lynch
 Wilma J. Malarik
 Douglas W. Marchyck
 Sandra Mason
 John & Deborah McCormack
 Pamela A. McCourt
 Dr. Lucy Mercier
 Maureen P. Moloney & Douglas Peterson
 David & Nancy Neal
 Brian & Debra Nickoloff
 Gerald G. Osborn, DO & Sue Granger
 Judith O'Shea
 Howard H. & Alice K. Parker

Nancy M. & Charles O. Press
 James Rice
 David & Joanne Riebschleger
 Muriel W. Rokeach
 Dr. Sally Rypkema & Tim M. Allen
 Saint Paul Foundation
 Salomon Smith Barney
 Jay & Lisa Sands
 Edward I. & Marcella G. Schalou
 Linda Scott
 John & Lori Seita
 Dr. Loudell Snow
 Paul Spata III
 Colleen M. Swanigan
 Lavone Swanson & Karen Winkler-Swanson
 Betty Tableman
 Eileen T. Tauster
 Susan E. Trojanowicz
 Roger & Linda Wallace
 JoAnn Westrick
 Dr. Margaret H. Whalen
 Dr. Victor & Mrs. Imogene S. Whiteman
 Andrea L. Wulf
 Frederick W. Zang



SHARE THE NEWS
 WITH YOUR COLLEAGUES



Michigan State University brings its

BLENDED STATEWIDE CLINICAL MSW PROGRAM

to your area—supporting professional goals while acknowledging personal lives

- ▶ Advance your career by completing an MSW degree in a part-time program—without a long commute—while keeping your job
- ▶ Fit learning into your own schedule, when it's convenient, rather than on rushed evenings after a busy workday
- ▶ Develop a community of student colleagues in your region for collaboration and support during the MSW program and beyond

The MSU School of Social Work is accepting applications for the accredited, blended statewide Clinical MSW Program with a concentration in clinical practice. Available to qualified students throughout Michigan, this program combines the best features of face-to-face, videoconferencing, and online instruction. A unique learning community structure brings quality, clinically-focused graduate social work education and regional MSW faculty mentors close to you.

FIND OUT MORE! Call (800) 306-2249 or email swdisted@msu.edu

GET IN TOUCH

Tell us what you're doing today!

Notes from Alumni will be featured in the *Fall 2007 News*.

Name when enrolled _____ Circle degree earned: BA / MSW / PhD
Current name _____ Year of graduation _____
Current address _____ Home phone _____
City/state/zip _____ Business phone _____
Please check here if this is a new address E-mail address _____

Business/employer _____
Business address _____ City/state/zip _____

Briefly describe your professional activities and other information you want your classmates to know

Please send this form to: School of Social Work, Michigan State University, 254 Baker Hall, East Lansing MI 48824
E-mail: socialwork@ssc.msu.edu

Web site: <http://www.socialwork.msu.edu> Alumni web site: <http://www.msu.edu/~sswalum/>

OUR MISSION: We are dedicated to educating students for competent, responsive, and ethical social work practice.
Our teaching, research, and outreach seek to promote positive change and social justice
for diverse communities, families, and individuals.

Michigan State University is an affirmative action, equal opportunity educational institution.

School of Social Work
Michigan State University
254 Baker Hall
East Lansing MI 48824

Nonprofit Org.
US POSTAGE
PAID
East Lansing MI
Permit No. 21