



School of Social Work
MICHIGAN STATE UNIVERSITY

SOCIAL WORK IN ACTION

Spring 2022



CELEBRATING OUR GRADUATES



Celebrating student success

Dear Friends of the MSU School of Social Work,

I hope this finds you enjoying a happy spring. It seems unbelievable that we have all endured over two years of pandemic-related restrictions, losses, and pivots. The stories of social work resilience and advocacy during these times have been truly inspirational.

As a School we are embracing the chances we have had to come back together in person. We kicked off the semester with two weeks of remote learning and then moved back to the classroom. Our faculty have been incredible with all the changes required these past two years. Their leadership, kindness, flexibility, and engagement have been so beneficial to our students and community.

Early May marked commencement for our BASW and MSW graduates. It was tremendous to celebrate with our outstanding students. I hope you enjoy the photos of some of our graduates in this newsletter.

We are celebrating student success in this spring edition. Inside you will not only see some of our graduates but also current students who are doing remarkable things.

Our PhD students and alumni make us very proud. You will see several featured here who have won awards, fellowships, and other accolades. The School's Phi Alpha chapter was active this spring in supporting each other and our community. Inside you will also see a story about the impressive work of our Student Advocates for Essential Needs Security (SAENS) group. Students in field throughout the year provided vital services across the state of Michigan. We are grateful for the support we receive from our field supervisors, liaisons, and placement sites. It is very exciting to see the impressive work of our students and how they are contributing to the future of social work.

As our graduates transition to MSU School of Social Work alumni they join the thousands of you who are making a difference in a myriad of ways. So many of you share your talents with the School, and for that I am tremendously grateful. If you would like to get involved, please respond to the brief survey on alumni engagement if you have not already done so (link on page 13). Your support of the School helps us to continue to grow and deliver our mission of excellence in teaching, research, and service.

Thank you.

Anne K. Hughes, PhD, MSW
Director
Associate Professor
School of Social Work
Michigan State University



NASW–Michigan *Students of the Year*

MSW STUDENT

Sterling Bentley



NASW–Michigan MSW Student of the Year **Sterling Bentley** came to MSU to learn, not to teach. Not an unusual position for most graduate situations, but for Bentley, this was as much about what happens outside the classroom as in it. For most of his adult life, Bentley, a queer trans man, has had to inform everyone around him about his identity, his orientation, and his passion for

advocacy. Coming from rural Appalachia, Bentley has often been the only LGBTQ+ person in the room, the first to bring certain topics of sexuality and gender to communities, and the first person young people have had to relate to. His advocacy work specifically reached out to trans and gay youth in rural communities that needed help accessing medical and emotional support.

“I needed to know MSU was not just a resource center doing academic work (on queer and trans issues) but there were people in the department with the same identity. I wanted to learn and not need to teach along the way,” he said. He “naively considered social work as only child welfare or one-on-one counseling,” but the discovery of macro social work led him directly to MSU.

“I found a home for social justice within social work,” he said and moved here in August 2021 with his wife and their dog, Georgia.

“The reason for coming here is to try to balance the experience and skill set I have—that not a lot of my peers have—with what I need to learn still,” he said. “A lot of what our society is missing is authenticity, and that is how I am trying to live my life.”

BASW STUDENT

Emily Cohen



BASW senior **Emily Cohen** was named the *NASW–Michigan Undergraduate Student of the Year* from Michigan State University. Emily’s commitment to academic excellence as an Honors College student and School of Social Work Research Scholar is a small fraction of her accomplishments as a student in the School of Social Work. Her numerous leadership and advocacy

initiatives over the last four years have made lasting impacts on the MSU, social work, and Greater Lansing communities.

In May, Emily received the *MSU Board of Trustees Award* as one of 181 students to graduate with the highest scholastic average one can receive, a 4.0 GPA. She was recognized during the commencement ceremony and will receive \$1,000 from the University for this accomplishment.

Whether helping secure grant funding for low-income elderly residents to receive free Internet access as a Community Engaged Scholar, co-developing and co-leading scholarships and workshops as a student leader to help MSU faculty with supporting students experiencing housing and food insecurity, or organizing a donation drive that delivered essential needs products to hundreds of elementary school children and their families at her field placement, Emily’s focus always remains upholding the *Code of Ethics* and beyond.

PhD students are making headlines



PhD student **Emmanuel Chima** was recently awarded the *2022 Mandela Washington Fellowship for Young African Leaders*. The fellowship was awarded by the College of Arts and Letters for research in support of the academic programming for the Mandela Washington Leadership Institute in Civic Engagement at MSU during summer 2022. The institute is a federally funded initiative administered by the Alliance for African Partnership and the Global Studies in the Arts and Humanities Program at MSU. In addition, participation in the institute fulfills the experiential learning requirement for the Graduate Certificate in Global Studies in the Arts and Humanities.



PhD student **Jennifer Hirsch** has been awarded the *Charles P. and Linda A. Thompson Endowment for Social Science Research* scholarship. This endowment supports graduate student research in the College of Social Science. Both graduates of MSU and highly accomplished in their careers, Linda and Charles Thompson are socially conscious philanthropists who provided a generous gift to MSU to establish this endowment in support of research that is rooted in social science and crosses academic disciplines to help resolve the world's problems.



PhD student **Leonardo Kattari** won the *2022 Society for Social Work Research Book Award* honorable mention for the book they co-edited, *Social Work and Health Care Practice with Transgender and Nonbinary Individuals and Communities: Voices for Equity, Inclusion, and Resilience*. The book examines issues across the lifespan of transgender and nonbinary individuals whilst synthesizing conceptual work, empirical evidence, pedagogical content, educational experiences, and the voices of transgender and nonbinary individuals.



PhD student **Ha-Neul Kim** has been awarded the *Kenneth E. Corey Research Enrichment Fund Scholarship*. The intent of this endowed fund is to benefit students and faculty of the College of Social Science at Michigan State University. Professor **Kenneth E. Corey** served as dean of the MSU College of Social Science from 1989-1999. As a reflection of his deep affection for and continued close relationship with the MSU College of Social Science, and to further nurture the research culture within the College, he established this endowed fund to provide ongoing support for research within the College.



PhD student **Yuan Xiong** has been accepted to the Summer Intensive Program sponsored by the Institute for Sexual and Gender Minority Well-Being at Northwestern University. Xiong has published seven international conference presentations and six peer reviewed publications on LGBTQ health and mental health. These include specific topics of HIV prevention/self-testing, digital mental health services, Hepatitis C prevention/linkage to health services, gay-friendly HIV provider training, and prophylaxis use among Chinese MSM. Their research goals are to reduce stigma and improve health care services for people identifying as sexual and gender minorities especially in China where such services are virtually non-existent.

John R. Sougstad Memorial Scholarships awarded to students specializing in school social work

In fall of 2021, the School of Social Work established the *John R. Sougstad Memorial Scholarship* to honor his memory as a champion of the social work profession, particularly school social work. This spring, we are happy to announce that the first three recipients of this scholarship have been awarded to three MSW students specializing in school social work.

Our school social work team, consisting of **Mark Nester**, **Kim Battjes**, and **Stephene Diepstra**, selected **Marshall Burns**, **Kaitlyn McLeod**, and **Sophie Meidl** to be the inaugural recipients of the *John R. Sougstad Memorial Scholarship* for their dedication to learning the skills needed to be a successful school social worker.

School Social Work Certificate Director Mark Nester stated, “These three students showed exemplary skills and commitment to the field of school social work. I’m confident

they will represent the MSU School of Social Work at the highest level in their future positions. We hope

this scholarship in honor of the late John Sougstad will help them on that path.”



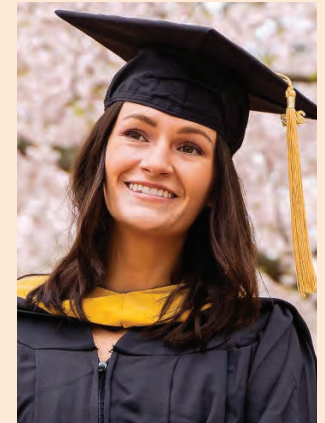
Marshall Burns

“With the *Sougstad Scholarship*, I will be able to further my education in social work and instruct other students with my predecessors’ knowledge.”



Kaitlyn McLeod

“I am so honored to be awarded this scholarship. It will help me get a head start on my student loans!”

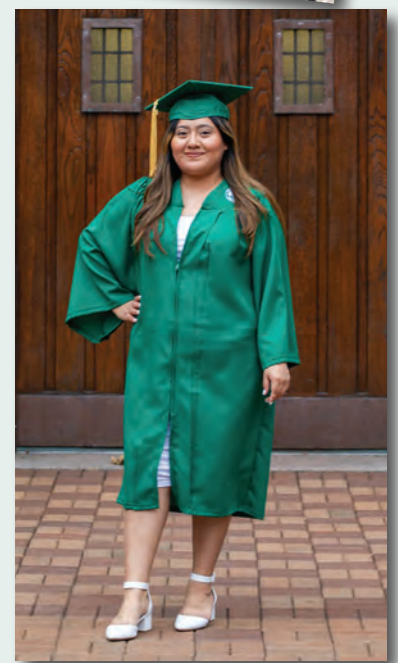


Sophie Meidl

“I am so honored to have been awarded the *John R. Sougstad Memorial Scholarship* and to be recognized for my promise as a future school social worker. May his legacy live on forever.”

CONGRATULATIONS TO OUR 2022 GRADUATES

2022
Outstanding
Senior
Yolanda Crim



CONGRATULATIONS TO OUR 2022 GRADUATES



Phi Alpha Honor Society inducts 29 students

MSU School of Social Work is one of six charter chapters of the Phi Alpha Honor Society, a student organization that embodies social work values, promotes community through building closer bonds among students, and recognizes high academic achievement.

With over 450 chapters across the United States, Phi Alpha is the largest honor society dedicated exclusively to social work. This spring, 29 MSU School of Social Work students were inducted into Phi Alpha.



Phi Alpha Honor Society 2022 Inductees

Kate Nowak Alexander
 Laura Ault
 Miranda Bargert
 Quincy Baxter
 Sam Campbell
 Aaron Chappel
 Emily Cohen
 Mara Culler
 Brandi Drent
 Elizabeth Fisher

Noah Freye
 Adrianna Glasgow
 Katie Hiatt
 Steven Holmes
 Cassandra (Sondra) Jones
 Tyler Jones
 Annika Linzmeier
 Jessica Lundy
 Brianna McCray
 Alison Moore

Sara Rausch
 Taryn Rieske
 Kristin Hoepfner Rupp
 Chelsea Samson-Pechtel
 Stephanie Schreier
 Mary Jane Thayer
 Kristie Thebo
 Brianna Tori
 April Townsend

Community service is an important part of Phi Alpha and throughout the year, students volunteer their time and skills at various service projects such as the Hippy Hop 5K. All proceeds from the race go to the Child Benefit Fund, which has been assisting at-risk families in Ingham County for over 40 years, providing funding for clothing, sports fees and equipment, emergency needs, extra-curricular activities, and holiday gifts for approximately 250-300 children per year.



L-R: Tyler Jones, Brianna Tori, Steven Holmes, MJ Thayer, Jessica Lundy, Taryn Rieske, Jodi Hutchings

FAME provides important coaching, peer support, resources, and programming

FAME, **Fostering Academics Mentoring Excellence**, is a community program in the School of Social Work at Michigan State University that serves students who have experienced foster care, kinship care, legal guardianship, and homelessness.

Since its founding in 2007, FAME has provided resources and programming to assist students in achieving their academic and personal goals and to prevent barriers to retention and graduation. From life skills coaching and peer support to emergency financial assistance, FAME has had a profound impact on many Spartans.

Chiquita Whittington is the director of FAME and lead life skills coach. She's a social worker who has made it her life's mission to advocate and provide resources for children, adolescents, and young adults, especially those who are vulnerable and have directly been impacted by things such as poverty, oppression, homelessness, and out-of-home placement.

"As a director, I coordinate all services provided by FAME, including life skills coaching, mentoring, student advisory board, monthly workshops/trainings, recruitment, and finals week survival kits," said

Whittington. "As the head coach for FAME, I provide individualized services to 70–100 MSU students per year. I provide supervision for a team including program staff, interns, and volunteers. Not only is it my goal to make academia easier for fostered youth, but I want to provide the support and resources that these students need beyond the collegiate level."

Ashley Hayden is the FAME mentor coordinator and leads the program that matches students with mentors from the community. Mentors serve as social, emotional, and professional support for students as they navigate their academic, professional, and personal goals on campus.

Mario McLean is a recent alum of the FAME program. When asked how he benefited from FAME, McLean said, "FAME was beneficial because it provided a safe outlet for me to communicate with my peers and be vulnerable at times. On a campus as big as Michigan State, it's easy to feel alone and out of place; FAME opened their doors and made my peers and I feel welcomed from day one."

"It was also encouraging to see other foster youth break barriers by being in college and being active in a

student organization such as FAME. Not many times do you hear or even see the success stories of foster youth, so it was fulfilling to be a part of a movement in which I could lead by example for those who would come after me."

Another recent FAME alum, **Brandon Drain**, said, "The program offered something stable in my life—something consistent and valuable. In a way, the people I connected with became like family. It extended far beyond just being an academic/mentoring program—it became something so intrinsic to my social and collegiate life."

Nationally, only 3–10% of former foster youth earn a bachelor's degree by age 26. While at MSU, that number rises to 32% across all students that have experienced foster care or out-of-home placements. We know FAME can help students reach their goals of graduating and finding a great job, but there is more work to be done. The FAME team is working hard to spread the word about FAME and all of the services they provide.

If you would like to be involved with FAME as a student, mentor, or financial contributor, please visit fame.socialwork.msu.edu.



Chiquita Whittington



Ashley Hayden



Mario McLean



Brandon Drain

Student Advocates for Essential Needs Security (SAENS) hosts workshops at MSU

On the morning of April 4, 2022, four BASW students—**Carson Biederman, Mark Bruey, Emily Cohen, and Itzel Trejo-Gutierrez**—from the social work student organization, **Student Advocates for Essential Needs Security (SAENS)**, delivered their educational workshop, *Expanding Academic Advising: A Guide to Awareness of and Supporting Student Essential Needs* to over 60 MSU academic advisors. In pursuit of its mission to eliminate food, housing, other essential needs insecurities of MSU students, SAENS aims to provide MSU faculty and staff with the tools needed to support such students.

The workshop began with the student leaders highlighting the prevalence of essential needs insecurity of college students. In a survey of over 38,000 college students across the nation, The Hope Center reported over 58% of respondents experienced a basic needs insecurity, including 38% of those at four-year institutions experiencing food insecurity. The results from a November 2021 survey by SAENS illuminated various struggles MSU students face such as paying bills, skipping meals, not being able to afford food, and struggling to focus in the classroom due to a lack of access to essential needs.

The workshop then delved into the collaboration needed between advisors and students to address such challenges, along with actions advisors can incorporate in their future student advocacy. The student leaders emphasized numerous small steps advisors can take to strengthen the trusting rapport needed for students to feel comfortable with addressing their needs: directly connecting students with support programs and resources as opposed to just sharing information; communicating how to apply for emergency funding or scholarships; including links to MSU resources that support students more prone to essential needs insecurities



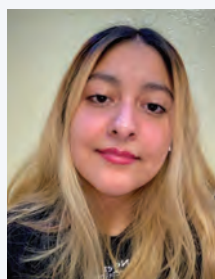
Carson Biederman



Mark Bruey



Emily Cohen



Itzel Trejo-Gutierrez

in email signatures and automatic responses; and asking intentional, pointed questions about any non-academic support students need.

The immediate impacts of *Expanding Academic Advising* on the MSU advising community are positive. The SAENS leaders are confident that there is powerful momentum around strengthening all student-advisor relationships, especially for those facing significant challenges. “I witnessed how vital it is to create active conversations around critical topics,” Cohen reflects, “The workshop showed me the need for spaces of reflection and the impact of student voice in leadership spaces.”

Equally as positive have been the student leaders’ understanding of the importance of applying their social work knowledge and skills to meaningful macro advocacy. For the graduating seniors, the workshop felt like a culmination of all they’ve learned as social work students. For Biederman, “Being a member of SAENS has taught me so much

about advocacy and how to extend what I have learned in our social work classrooms into real action. SAENS served as a reminder that often, the issues social workers want to tackle are invisible to so many. Facilitating the *Expanding Academic Advising* workshop reminded me of the need to approach all my advocacy with a strengths-based approach.... I am going to take everything I learned from being a part of this organization for the rest of my professional career, as it has made me a more open-minded, attentive, and self-aware individual.”

SAENS’ treasurer, Mark Bruey, shares similar sentiments. “Being a member of SAENS has given me a unique perspective on advocacy. The opportunity to prepare for and execute presentations to staff and advisors from across the University, has allowed me to effectively advocate for my classmates and has provided experience that is incredibly valuable to my own development as a social worker.” Itzel Trejo-Gutierrez followed with, “Being a member of SAENS has taught me the importance of advocating for others as well as how to do teamwork, while also putting me out of my comfort zone to do great things that I know will help with my career path in the future.”

The last two years of the social work student’s efforts in SAENS has led to the development and facilitation of their workshops to over 100 MSU faculty and staff; **a scholarship project that has awarded six MSU students facing essential needs insecurities with \$500 each**; and supporting the MSU Student Parent Resource Center, FAME, and TRIO with furthering their missions to support students facing essential needs insecurities by providing them with hygiene products and grocery store gift cards. Their commitment and dedication to MSU students have made powerful impacts on many, and ones that will surely continue as they go on to their next chapters.

Villareal honored with the *MSU GenCen Community Engagement Inspiration Award*

Monica Villareal received her Master of Social Work degree with a specialization in Organizational and Community Leadership from Michigan State University and has since joined the faculty in the School of Social Work. Recently, Villareal received the *MSU GenCen Community Engagement Inspiration Award* for her tireless efforts serving her community of Flint, Michigan.

Monica grew up in the Flint area and returned to serve as a pastor and mission developer. Assigned to Salem Evangelical Lutheran Church in Flint, Villareal serves residents and children in one of the most economically vulnerable neighborhoods in Flint and provides community services to address food insecurity and other basic needs. The Northside neighborhood where Villareal works was one of the hardest hit from the Flint Water Crisis and currently is one of the hardest hit by the COVID-19 pandemic.

In addition to responding to these pervasive and long-term public health crises, Villareal has led neighborhood efforts to enhance safety, improve community-police relations, shutter local drug houses, and create safe green spaces where children can play. She also works as a community organizer for Michigan United, mobilizing the larger Flint community on issues pertaining to voting, advocacy, and civic engagement in order to amplify resident voices in city- and county-level decision making, particularly decisions addressing the long-term health effects associated with the Flint Water Crisis.

Through Villareal's work on the Flint Water Crisis Resource and Recovery Committee, she has been an advocate for the right to clean water across the state of Michigan and has spoken on the issues of water rights at the Lutheran World Federation Assembly in Namibia.

Villareal is also a member of the Greater Flint Coronavirus Taskforce on Racial Inequities—a task group charged with disseminating public health information to Flint residents, including information about the Flint Registry that will monitor the health and well-being of Flint residents, particularly children, well into the future.

Since 2019, Villareal has led the Flint Community Initiative, an internship program offering MSU students a unique opportunity to learn about the assets of the Flint community through intentional community engagement and contributions to projects proposed and facilitated by Flint organizations. The program is a partnership between the College of Social Science, the School of Social Work, and the Flint community. The 2022 program begins in May and runs through August.



Monica Villarreal
Flint Community Initiative
Program Coordinator

**FLINT
COMMUNITY INITIATIVE**

Leveraging assets for Flint's future



Dr. Hyunkag Cho

Concurrent Intimate Partner Violence: Survivor Health and Help-Seeking

In our latest installment of our Research Spotlight podcasts, **Dr. Angie Kennedy** talks to **Dr. Hyunkag Cho** about his recent study, *Concurrent Intimate Partner Violence: Survivor Health and Help-Seeking*.

In this study, Dr. Cho examined intimate partner violence polyvictimization (multiple victimization by multiple perpetrators over time) using a national dataset collected in 2010, *National Intimate Partner and Sexual Violence Survey*. He classified various polyvictimization experiences into six distinctive patterns: sexual violence, psychological aggression, multiple violence, coercive control, physical and psychological violence, and stalking.

Multiple violence was the most common type of polyvictimization among female survivors, while coercive control was the most common among male survivors. Multiple violence and physical and psychological violence inflicted more negative health consequences than the other types. Intervention and prevention approaches that consider polyvictimization types as a part of the survivor need assessments will improve services.

Other podcasts in this series discuss *Youth Engaged in Leading and Learning (YELL)*, which is a curriculum-based leadership program for high school-age youth and also *Methods for Combating the School-to-Prison Pipeline*. You can find them in the Research section of our website.



Dr. Angie Kennedy

New employment resource: Job board for social workers



Raúl Vargas
Student Support
Coordinator

In January of 2022, the School of Social Work introduced a social work job board on our website for students, alumni, and other social workers in the community. Through May, employers submitted over 150 openings ranging from MSW program director, therapists, counselors, to school social workers, and many more. A unique feature of our job board is that we require employers to be transparent about compensation and list a range or specific salary for each position.

Job openings are approved and updated regularly and are periodically shared across our social media platforms to increase awareness and visibility.

In addition to the job board, Student Support Coordinator **Raúl Vargas** organized resume workshops and other career assistance for our soon-to-be graduates. Feedback has been extremely positive, with one recent graduate receiving multiple job offers, including one that she accepted and started within just a couple of weeks of earning her Master of Social Work degree.

You can find the job board in the Alumni & Giving section of our website.

Continuing Education offers workshop centered on the History and Trauma of U.S. Indian Boarding Schools

Evidence of maltreatment in U.S. religious and governmental Indian boarding schools and the resultant impact of the infliction of abuse and lack of care for generations continues to reverberate through a resilient and courageous people who are attempting to heal through cultural and mainstream ways.

MSU School of Social Work Associate Professor Emeritus **Suzanne L. Cross**, PhD, ACSW, LMSW, will present the *History of U.S. Indian Boarding Schools: Resultant Intergenerational Trauma*. Dr. Cross is a researcher for the National Native American Indian Boarding School Healing Coalition and a consultant for Foster Care Curriculum Development & Programming. Dr. Cross is a citizen of the Saginaw Chippewa Indian Tribe of Michigan as well as an artist creating bead work and traditional shawl making.

Dr. Cross explains, “The session is designed to increase historical knowledge of the U.S. Indian Boarding Schools as an origin of trauma and intergenerational trauma—a rationale as to why infliction of trauma continues to reverberate through a courageous people attempting to heal by cultural and/or mainstream ways. Cultural differences will be shared to increase the effectiveness of work with the AI/AN population. The historic role of helping professionals will be shared to explain the rationale for client resistance.”

This workshop will take place in honor of **Michigan Indian Day on September 23, 2022**. Michigan Indian Day, enacted in 1974 (MCL 435.16) is an opportunity for Michigan citizens to better understand and appreciate the many contributions that people of Native American descent have made to our state. This event marks the 22nd consecutive year the MSU School of Social Work has honored the important day.



Dr. Suzanne L. Cross
Associate Professor Emeritus

WORKSHOP DETAILS

9/23/22, 9:00 am–11:00 am

MSU Federal Credit Union
4825 Mount Hope Road,
East Lansing, MI, 48823

Seating is limited, registration required: <https://www.eventbrite.com/e/315738411087>

Continuing Education contact hours available.

Please contact us with your questions, accommodation requests, or concerns by email swkce@msu.edu or call 517-353-3060.



School of Social Work
MICHIGAN STATE UNIVERSITY

HELLO, ALUMNI

DID YOU KNOW YOU COULD...



Mentor Students

- Field Instruction
- Guest lecturing
- Career Networking

Use Our Job Board

Submit postings or look for jobs

Stay Informed

Stay up to date on what's happening at the School of Social Work

Continue Your Education

Discounted professional continuing education courses

Attend Events

Alumni Speaker Series highlighting Alumni expertise

Share Your Story

Let us know what you have been up to



Natalie DeVolder

What led you to choose social work and MSU? I've known that I wanted to be a social worker since I was age 17 and shadowed an LMSW at my local regional educational service agency. Like many social workers, I had personal experiences that drew me to the field. My younger brother was

diagnosed with a rare genetic condition as an infant and our family life was greatly impacted by inadequate social systems. I knew as a teenager that I wanted to help make changes that would improve the lives of others. Shadowing a social worker provided a perspective on what a career in the helping professions might look like and confirmed my intuition that it was a field I'm meant to be in.

I was intentional about choosing an MSW program because I knew that I wanted to pursue macro social work. Many programs offered in Michigan provide generalist training, and I wanted an education tailored to macro experiences. I chose MSU because the Organization and Community Leadership track offered the macro focus that I was seeking.

You were an intern and now are a staff member with the Kinship Care Resource Center, a community program within the School of Social Work at MSU.

What are some of the responsibilities you have with this position, and what do you hope to accomplish in your new role? My role as a project administrator with the Kinship Care Resource Center means that I am responsible for developing and coordinating project activities in support of the effort to promote the safety, permanency, and well-being of kinship caregivers and the relative children in their care. This position is fully macro, which means my day-to-day responsibilities can include meeting with stakeholders, developing outreach plans, and supporting kinship navigators in their provision of services. In my new role I hope to improve the lives of kinship caregivers in Michigan by supporting the provision of direct services while also focusing on large-scale systems change.

How did your MSW degree prepare you for your role with KCRC? Completing my BSW degree allowed for the development of my generalist practice skills, but it was the completion of the MSW program at MSU that allowed me to build macro social work skills. I use these skills frequently in my role, whether it is understanding the research and evaluation process, conducting community assessments, or creating an outreach plan. The OCL program introduced and enhanced many of the macro skills that I rely on to do my job effectively.

What do you enjoy doing when not working? I love reading, gardening, and playing with my two cats, Blue and Mia.



Ikram Adawe

Ikram Adawe is an East Lansing-based social worker and Somali refugee who uplifts the communities around her through empathy and action. She earned her MSW from the Michigan State University School of Social

Work in 2010, and is currently a therapist with both the MSU Center for Survivors and Bridging Communities & Counseling Services, a private group practice she founded to better address the mental health needs of refugees and immigrants in the Lansing area.

At the Center for Survivors, Adawe takes a trauma-informed approach to help clients build resilience and coping skills to overcome the challenges their trauma has imposed on their lives. "When a client comes in for their first appointment, oftentimes you can just see the state of distress they're in. Especially right after an assault, many feel like it's the end of the world and that they are broken without any hope for healing," Adawe reflected.

"However, after working with them for a few weeks and starting to see their evolution, it just shows how much of a difference it can make for someone when they have a space to feel safe, supported, and heard. That's the biggest thing for me—seeing that change in my clients. That's what I look forward to every day," Adawe reflected.

Speaking fluent Somali, Arabic, and English, her first job was as an interpreter for newcomers to the country. "I came to this country as a refugee 23 years ago, and for my first job, I worked at a refugee resettlement organization as an interpreter to be the voice of the voiceless, because a lot of immigrants and refugees don't speak the language when they first come into the country. Even after leaving that job, I never disconnected from that world, just because it's such an important part of my life," Adawe said.

Relatedly, Adawe shares how each of us in the MSU community can be better allies to the diverse and dynamic immigrant and refugee communities in the mid-Michigan area. "There are a lot of ways to be involved and to be an ally, as long as you are willing to get out of your comfort zone a little bit," Adawe said."

ALUMNI ACHIEVEMENT



Kristen Prock recognized for outstanding research

Dr. **Kristen Prock** earned her PhD from the MSU School of Social Work in 2019 and subsequently joined the faculty at the University of Wisconsin–Whitewater as an assistant professor of social work and affiliated faculty in Women’s and Gender Studies. Dr. Prock was recently chosen for the *Outstanding Research Award* in recognition for making significant advances to knowledge, technique, or creative expression in her professional discipline. Her research examines LGBTQ-related discrimination, policy, and practice in higher education, exploring the lived experiences of individuals facing multiple marginalizations and teaching evidence-based practice in social work education.

Her current project, *Photovoice for Social Justice*, seeks to amplify the voices of LGBTQ+ students at UWW through art, advocacy, and action—building bridges through her extensive research experience to undergraduate student advocacy and retention.

Dr. Prock has an impressive record of research dissemination, having published 15 peer-reviewed articles and presenting her work at multiple national conferences in a few short years. Through this important work, she has augmented the voices of marginalized communities in academic scholarship and held academic space for the perspectives of those at the intersections of oppression.



Steven Lindquist inducted into South Dakota Hall of Fame

Steve **Lindquist** is a 1978 alumni of the MSU School of Social Work MSW Program and has devoted his career to helping others. He was appointed administrator of the South Dakota Human Services Center in the wake of a crisis at that facility. At that time, he was the youngest administrator in that facility’s 100+ year history. He led the design and construction of the George S. Mickelson Center for the Neurosciences and served as director of mental health for the State of South Dakota, making him one of only two people to have that dual role.

As the executive leader of Avera Behavioral Health, Lindquist expanded treatment programs and led the design and construction of the Avera Behavioral Health Center. The number of outpatients served by his programs is well over 100,000.

Invest in initiatives meaningful to you

Students enter the profession of social work with a strong commitment to service, integrity, and competence. As social work educators, we believe that the good our graduates do is multiplied and extended across generations, and we are honored to help prepare them for their service.

In keeping with land-grant principles of education, research, and outreach/service, we take seriously our

responsibility to the education and training of students as well as outreach for community engagement.

If you share our values, please consider supporting these efforts with a gift to one of the scholarship and endowment funds highlighted below. A full list of giving opportunities and links to donate online can be found at socialwork.msu.edu/Alumni-and-Giving/Endowments.



Robert Little Scholarship Fund
This fund provides scholarships for graduate students with a career interest in child welfare, with preference for those who want to work in kinship care.



Dr. Mary Bremer Barron Scholarship Fund
This fund supports scholarships for students, with preference for those from the greater Flint community.



MSW Veterans Scholarship
This fund supports veterans by providing scholarships for study in the MSW program.



Paul P. and Donna K. Freddolino Endowment for Distance Education
This fund supports the School of Social Work's distance educational programs, including both student support and the development of new educational technologies.



The School of Social Work Endowed Fund
This fund provides a range of supports for the School, including student scholarships, support for faculty research, and support for School programs.



Future Leaders Endowed Scholarship in Social Work
This fund supports graduate students through scholarships, assistantships, or fellowships.



Gary R. Anderson Endowed Fund for Child Welfare Leadership
This fund supports workshops, lectures, and scholarships in the School related to child welfare leadership and workplace development.



Chance at Childhood Endowment Fund
This fund supports research, education, training, and outreach concerning intervention and treatment for at-risk children and families; children's justice; and coordination of professionals dealing with at-risk children and families.



Youth Education and Support
This fund helps build, test, and disseminate research focused on real ways to increase child and youth access to accurate, non-stigmatized knowledge of mental illness and recovery.



John R. Sougstad Memorial Scholarship
This fund supports MSW students who are entering the field of school social work and serves to honor the memory of John R. Sougstad.



SOCIAL WORK IN ACTION • Spring 2022

Writer and editor: Tony Beyers
Contributing writer: Liz Schondelmayer
Photos: Tony Beyers
Jacqueline Belden Hawthorne
Hippity Hop Race Facebook Page
Rose Homa Design

MSU School of Social Work

Baker Hall, Room 254
655 Auditorium Road
East Lansing, MI 48824

Visit the School on the web: socialwork.msu.edu



Join our Social Work Alumni Association
alumni.msu.edu/membership

Attend our Continuing Education sessions
socialwork.msu.edu/CE

Prepare for the Social Work Licensure Examination
socialwork.msu.edu/CE/Licensure

Qualify for State of Michigan School Social Work certification
socialwork.msu.edu/CE/Competency-Series

Become a Continuing Education presenter
socialwork.msu.edu/CE/Announcements

Become a Field Instructor or Field Faculty Liaison
socialwork.msu.edu/Alumni-and-Giving/Volunteering

Donate to support the School's scholarships, research, and programs
socialwork.msu.edu/Give

A Mission of Social Justice and Positive Change: The MSU School of Social Work is dedicated to educating students for ethical, competent, responsive, and innovative social work practice, and to conducting and disseminating high quality research that improves the well-being of the most vulnerable in society. Our teaching, research, and outreach synergistically promote social justice, positive change, and solutions to the problems facing diverse individuals, families, groups, organizations, and communities.

Michigan State University is an equal opportunity educational employer.



School of Social Work
College of Social Science
MICHIGAN STATE UNIVERSITY



OUR SCIENCE **TRANSFORMS THE HUMAN EXPERIENCE**
AND INSPIRES LEADERS